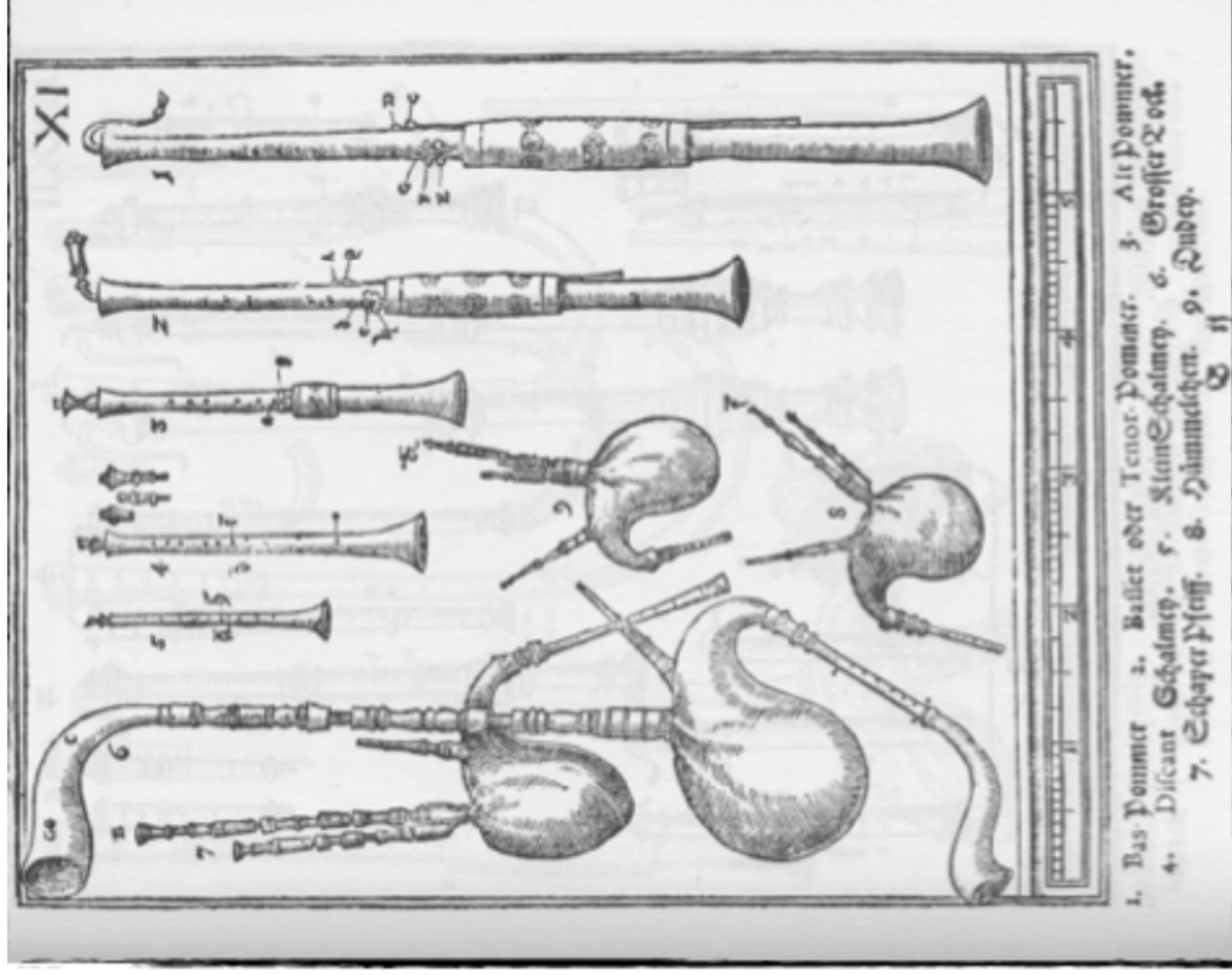


Syntagma Musicum

TAVOLA X - 1620

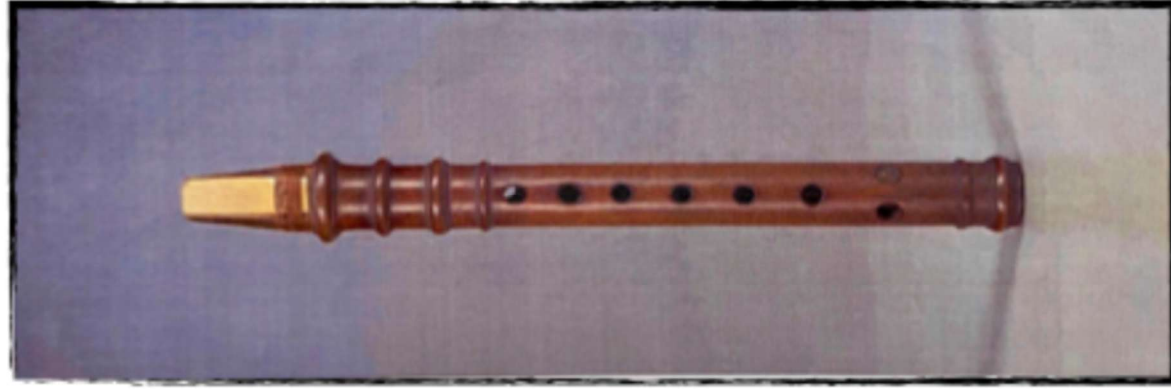
Ance doppie

- 1 Bas Pommer (*bombarda*)
- 2 Basset oder Tenor Pommer
- 3 Alt Pommer
- 4 Discant Schalmei (*ciaramella*)
- 5 Klein Schalmei
- 6 Grosser Bock (*cornamusa*)
- 7 Schaper Pfeiff
- 8 Hümmelehen
- 9 Dudey



Chalumeau

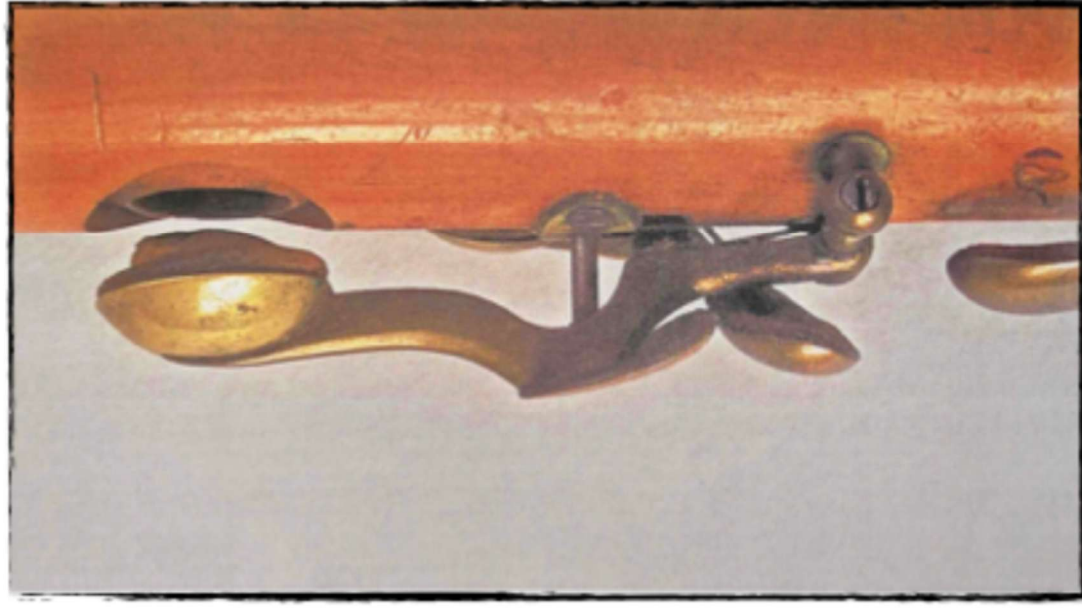
Ancia semplice



Chiavi per registro acuto



Clarinetto a due ... o più chiavi



Chiave

Sistema Tedesco

Müller



Sistema Francese

Buffet-Klose



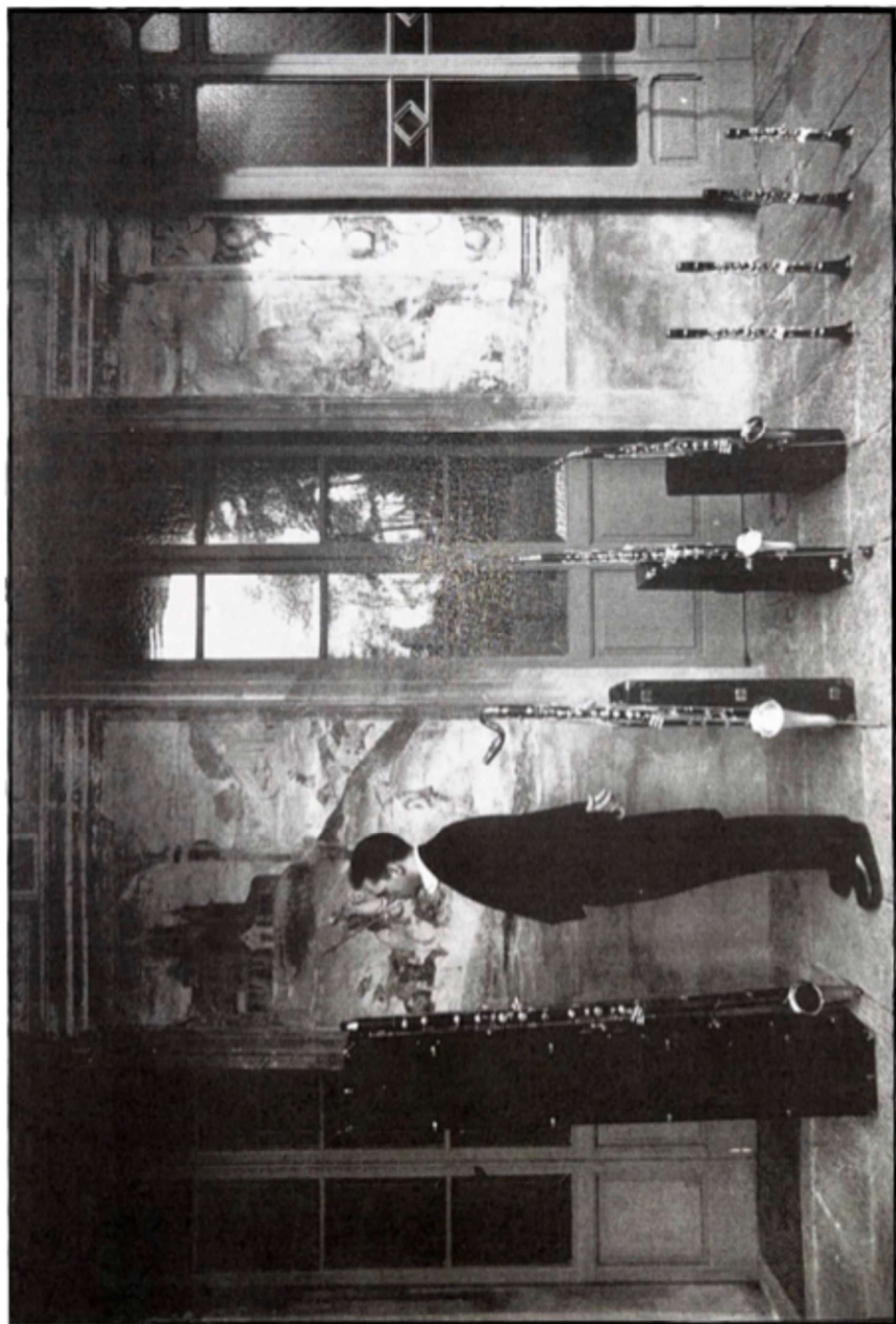
Chiavi ad anello Boehm

Fori cigliati

Sistema Francese (Boehm 1843)



Sistema Tedesco (Oehler 1905)



Johann Strauss Jr. Egyptianischer Marsch, Op. 335

Christian Thielemann, Wiener Philharmoniker

https://www.youtube.com/watch?v=fnK2LM0hpxQ&list=RDfnK2LM0hpxQ&start_radio=1